

Navigating the E-Society

E·S·R·C
ECONOMIC
& SOCIAL
RESEARCH
COUNCIL

@society

Dynamics of Participation and Exclusion

Loughborough
University

CD-R

700MB

CRSP
Centre for Research in Social Policy

Ofcom Seminar

November 29th. 2004

Graham Murdock

with Dr Antonia Ivaldi, Karen Kellard, Professor
Ruth Lister, and Liz Sutton

Communication Research Centre and
Centre for Research in Social Policy
Department of Social Sciences
Loughborough University



Focus

- Everyday lives in the e-society
- How are people navigating their way around the emerging digital information, entertainment and communication environment created by:
 - Home computer
 - Mobile phones
 - Digital television
 - Games consoles



Key Issues

Exclusion

- Who is excluded from the emerging e-society and why?
- Why do people 'drop out' of the e-society or never want to join?
- What are the implications for citizenship and social participation?



Key Issues

Participation

- How are digital technologies being used?
- How does use vary by social location, life stage and household organisation?
- How do people become more competent, confident and creative users?
- What economic, social and cultural resources support full participation?



Key Arguments

Digital Divides

- Exclusion is not an either/or condition - it is a continuum
- Access is a necessary but not a sufficient condition for self directed use

Digital Careers

- Access is not a one off event. It launches user careers with multiple possible outcomes



Key Arguments

Resources

- Access to material resources is not the only factor in play
- Social and cultural resources also play a central role



Social Resources

- Integration into social networks where digital communications technologies are used and valued
- Access to friends, family members, neighbours or colleagues who can provide practical help and support



Cultural Resources

- Competencies/digital literacies
- Identities
 - Feeling 'at home' in the new digital landscapes
 - The role of digital technologies in the construction and presentation of self



The Sample

93 households purposively selected to represent a range of:

- Income groups
- Ethnic groups
- Life stages
 - Children, teenagers, adults of working age, the elderly
- Localities
 - Rural/urban
- Household types
 - Those living alone, living with a partner, lone parents and families with children over 6 years of age



The Research

- Longitudinal
 - Two waves a year apart
 - Very high retention rate
- Multi-method
 - Household inventories
 - Individual usage diaries
 - In-depth interviews
 - Children's photographs and design competition

Navigating the E-Society

E·S·R·C
ECONOMIC
& SOCIAL
RESEARCH
COUNCIL

@society

Dynamics of Participation and Exclusion

Loughborough
University

CD-R

700MB

CRSP
Centre for Research in Social Policy



- Children presented with picture and asked for:
 - Their responses to a scenario of one child not having a computer at home.
 - Their description of events

Navigating the E-Society

E·S·R·C
ECONOMIC
& SOCIAL
RESEARCH
COUNCIL

@society

Dynamics of Participation and Exclusion

Loughborough
University

CD-R

700MB

CRSP
Centre for Research in Social Policy

Design a machine competition

Date: 17/5/04

Wave

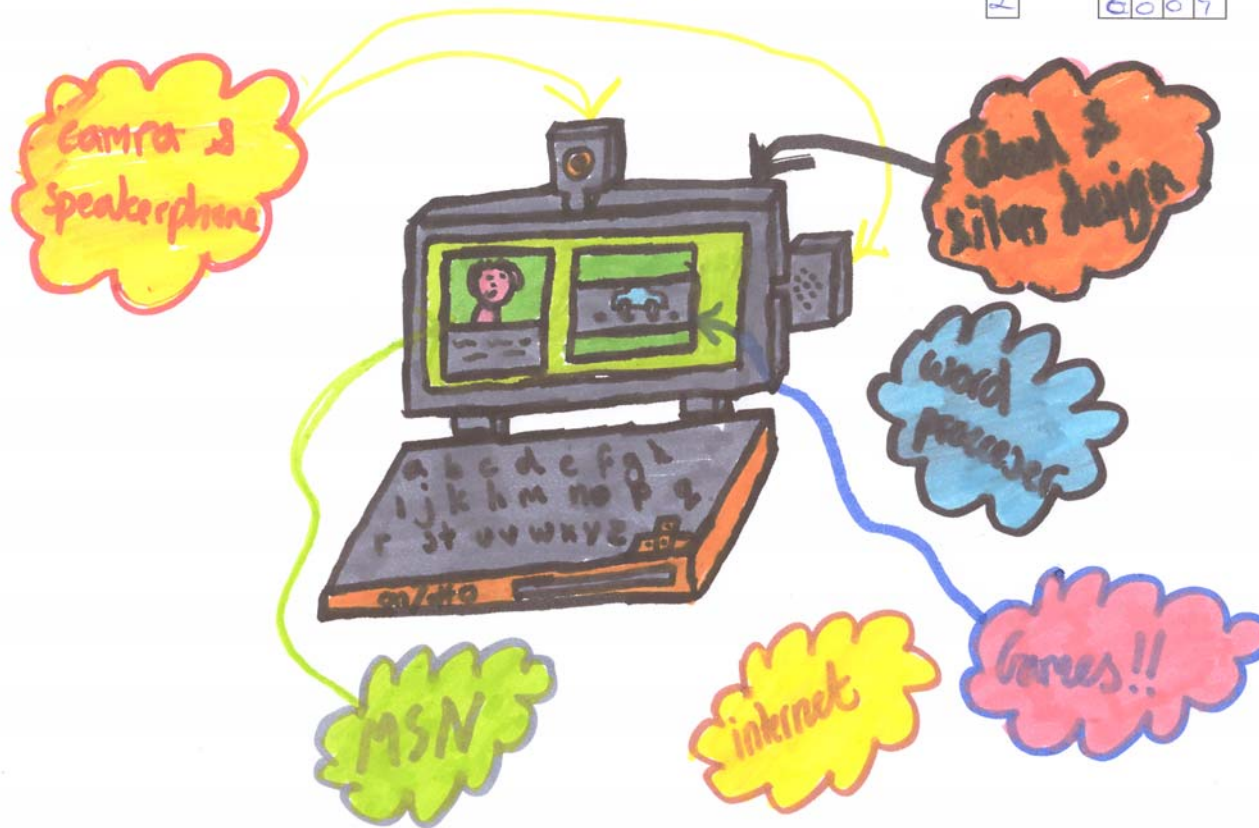
2

Household Number

6009

Person

CM1





Implications

Joining up policy

- Would neighbourhood mentoring schemes be an effective way of boosting and extending home computer use?
- Should advertising and promotional materials for home computers and mobile phones offer more images of elderly users?